

CLAIRE VOCK *COSTUMING* *PORTFOLIO*

Website: clairevock.com

Email: clairevock13@gmail.com



DESIGN- *The Birds*



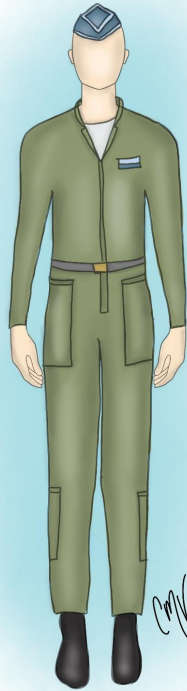
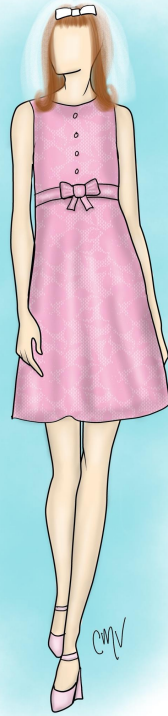
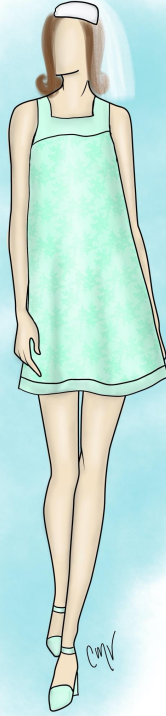
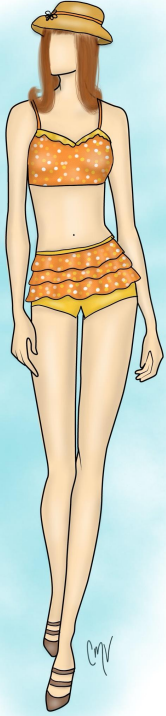
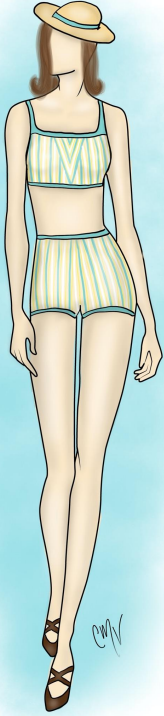
Taylor University Theatre
Director: Tracy Manning
Photos: Chloe Gard
Hair and Makeup: Eleana Manning

DESIGN- *The Birds*



Taylor University Theatre
Director: Tracy Manning
Photos: Chloe Gard
Hair and Makeup: Eleana Manning

DESIGN- *Cosi Fan Tutte* (set in 1968 Florida)



Taylor University Lyric Theatre
Director: Dr. Conor Angell

DESIGN- *Macbeth* (set in original context)



Taylor University Theatre
Director: Tracy Manning

DESIGN- *The Women of Lockerbie*



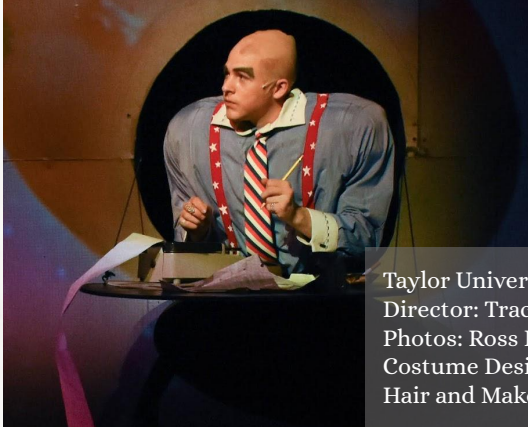
Taylor University Theatre
Director: Tracy Manning
Photos: Justin Meninger
Hair and Makeup: Liannah Foster

DESIGN- *Borrowed Babies*



Taylor University Theatre
Director: Jennifer Wolcott
Photos: Hailey Hamilton
Hair and Makeup: Liannah Foster

CONSTRUCTION- *The Little Prince*



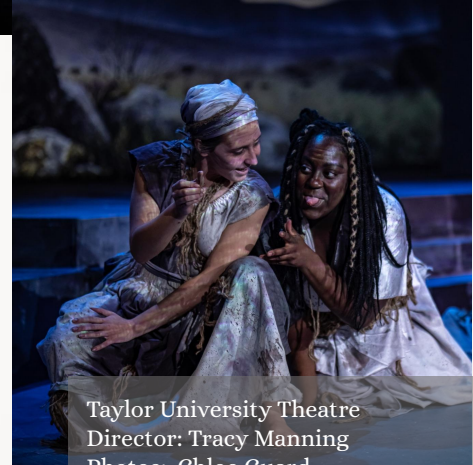
Taylor University Theatre
Director: Tracy Manning
Photos: Ross Kimbrell
Costume Design: Sara Bailey
Hair and Makeup: Eleana Manning

CONSTRUCTION- *White Christmas*



Taylor University Theatre
Director: Tracy Manning
Photos: Chloe Gard
Costume Design: Emma Dahlquist
Hair and Makeup: Liannah Foster

CONSTRUCTION- *Macbeth*



Taylor University Theatre
Director: Tracy Manning
Photos: Chloe Guard
Costume Design: Claire Vock
Hair and Makeup: Liannah Foster

WIGS- *Cinderella*



Shenandoah Summer Music Theatre
Director: Billie Aken Tyers
Photos: C King Media
Costume Design: Cheryl Yancy

WIGS- *Cosi Fan Tutte*



Taylor University Lyric Theatre
Director: Dr. Conor Angell
Photos: Chloe Guard

PAPERWORK- Quick Change Plots

Bridges of Madison County - ANNA LISE

SCENE	SONG	LOCATION	LOOK	DESCRIPTION	TIME	NOTES
ACT 1						
OVERATURE						
PROLOGUE	TO BUILD A HOME	DR	1	S/S blue button down, dark jeans, flats, wedding ring, small necklace, watch, gold hoops		
1.1: THE FIRST MORNING	HOME BEFORE YOU KNOW IT					
1.2A: ROBERT ARRIVES						
1.2B: "TEMPORARILY LOST"	TEMPORARILY LOST					
1.2C: "WHAT DO YOU CALL..."	WHAT DO YOU CALL A MAN LIKE THAT					
1.2D: INSIDE THE HOUSE						
1.2E: "YOU'RE NEVER ALONE"	YOU'RE NEVER ALONE					
1.2F: AFTER "YOU'RE NEVER ALONE"						
1.2G: AT MARGES WINDOW						
1.2H: BACK IN FRAN'S KITCHEN		SL	2	White shirt, teal capri pants	2 min+	Ent/Ext Stairs
1.2J: "ANOTHER LIFE"	ANOTHER LIFE					
1.2K: BUD CALLS HOME						
1.2L: "WONDERING"	WONDERING					
1.2M: BUD'S SECOND CALL						
1.3: "LOOK AT ME"	LOOK AT ME	SL	3	Plaid Shirt, flats	30 sec	Same pants, back wing
1.4A: "WORLD INSIDE A FRAME"	WORLD INSIDE A FRAME					
1.4B: AT THE FAIR						
1.4C: AT THE FAIR	SOMETHING FROM A DREAM					
1.4E: IN THE KITCHEN		SL	4	Slip, Pink dress	3 min+	Hallway
1.5C: KITCHEN + MARGE'S						
1.5D: "GET CLOSER"	"GET CLOSER"					
1.5E: "FALLING INTO YOU"	FALLING INTO YOU					
ACT 2						
2.1A: AT THE FAIR AND IN THE BEDROOM	STATE ROAD 21 WHO WE ARE AND WHO WE WANT TO BE	DR	5a			Slip
2.1B: IN THE BEDROOM PT. 2						
2.2A: IN THE KITCHEN		SL	5.5	Purple button front dress	<10 sec	Back wing
2.2B: "ALMOST REAL"	ALMOST REAL					
2.2C: RESTAURANT						
2.2D: MARGE'S PARLOR						
2.3A: BEDROOM		SL	5b	Slip		Backstage
2.3B: BEFORE AND AFTER/MILLION MILES	BEFORE AND AFTER YOU ONE SECOND AND A MILLION MILES					
2.4A: FRIDAY MORNING						
2.4B: THE FAMILY RETURNS		SL	6	Small print House dress		Preset on chair
2.4C: THE FAMILY RETURNS PT. 2						
2.4D: BUD & FRAN IN THE BEDROOM						
2.4E: Stealing the Car		SL	6	Flats		Mid BS
2.4F: IN TOWN & REWIND						
2.5A: THE YEARS GO BY	WHEN I'M GONE	SL	7	Purple dress, Hat, Heels, nylons	1 min 50 sec	
2.5A: GRADUATION						
2.5B: AFTER BUD'S FUNERAL						
2.5C: ROBERT'S OFFICE	IT ALL FADES AWAY	SL	8	Sweater, Glasses		
2.6: "ALWAYS BETTER"	ALWAYS BETTER	SL		Letter		Back wing

THE BIRDS - QUICK CHANGES

SCENE	ACTOR	CHARACTER	LOOK #	LOOK	DESCRIPTION	ASSIGNMENTS	LOCATION	NOTES
3 - INTRUDER	Eleana Manning	Diane	1.2	Unbuttoned	Remove sweater, unbutton shirt, Add watch	Claire/Lee	Stairs	Claire/Lee roll sleeves
	Steven Day	Nat	1.2	Outerwear 1	Add coat, baseball hat, shoes, watch	Angie	SL	No gloves, add flannel onstage in scene 2, Angie does watch on SL
4 - BIRTHDAY DRINK	Steven Day	Nat	1	Original	Remove outerwear		Onstage	Onstage in shift
	Eleana Manning	Diane	1.2	Unbuttoned	Remove Shoes		Onstage	By door
5 - JULIA ARRIVES	Steven Day	Nat	1.2	Outerwear 1	Add coat, baseball hat, gloves		SL	Remove onstage
	Eleana Manning	Diane	1.3	Sweater	Remove button up, add 70s sweater, orange blanket	Claire	Stairs	mattress to stairs, change second, preset for 8/9 during scene
7 - PRE-PARTY	Steven Day	Nat	1.3	T Shirt 1	Remove flannel		Stairs	
	Rissy Bland	Julia	1+	T Shirt	Remove hoodie, add blue shirt, clip		Stairs	Preset clip on ledge
8 - BIRTHDAY PARTY	Eleana Manning	Diane	1.4	Outerwear	Add coat, gloves, mask, switch to button up, shoes (onstage)	Claire	SL	Claire meet SL
	Steven Day	Nat	2	Party	Button up, suit coat	Claire/Lee	Stairs	After the women
9 - HEAT WAVE	Eleana Manning	Diane	2	Party	70s dress, barefoot, underdress shorts	Claire	Stairs	*Preset glass of wine
	Rissy Bland	Julia	2	Party	Wedding Dress, no watch	Lee	Stairs	
	Steven Day	Nat	1.4	Heatwave	Remove shirt	Lee	Stairs	Wet
10 - TIERNEY	Eleana Manning	Diane	1.5	Heatwave	Tank top, shorts	Claire	Stairs	Wet
	Rissy Bland	Julia	1.2	Heatwave	Tank top		Stairs	*Preset wet
11 - THEY RETURN	Eleana Manning	Diane	1.5	Heatwave	Add pants and socks	Claire	Stairs	Claire help with socks
	Steven Day	Nat	3	T Shirt 2	Second Shirt		Stairs	Full scene to change
12 - MIDDLE OF NIGHT	Rissy Bland	Julia	1.3	Flannel	Add Nat's Flannel		Stairs	Full scene to change
	Eleana Manning	Diane	1.3	Sweater	70s sweater	Claire	Stairs	
	Steven Day	Nat	4	Sleepwear	Remove pants (boxers), socks only		Stairs	
13 - JULIA MURDER	Eleana Manning	Diane	1.3	Sweater	N/A		Stairs	
	Rissy Bland	Julia	1.4	Sleepwear	Add mens shirt, remove flannel		Stairs	*Turn off blue light
14 - JULIA'S GONE	Eleana Manning	Diane	1.2	Unbuttoned	Button up and Tennis shoes	Claire/Lee	Stairs	Lee/Claire on Shoes
	Rissy Bland	Julia	1.3	Flannel	Nat's flannel, heels		SL	Ris grab heels by door on her way out
15 - PLAN TO LEAVE	Steven Day	Nat	1.4	Sleepwear	Remove shirt		Stairs	*Turn on blue light
16 - LEAVING	Steven Day	Nat	3	T Shirt 2	Put pants back on, Shirt		Stairs	
	Steven Day	Nat	3.5	Outerwear 2	Jacket, baseball hat, shoes		Onstage?	*Preset shoes on stairs
	Eleana Manning	Diane	1.4	Outerwear	Add coat, gloves, mask		Onstage?	No mask until leaving

PAPERWORK- Costume Plot

Cosi: The School for Lovers

TAYLOR UNIVERSITY LYRIC THEATRE

DIRECTOR: DR. CONOR ANGELL

COSTUME DESIGNER: CLAIRE VOCK

ACT ONE	SCENE 1.1	SCENE 1.2	SCENE 1.3	SCENE 1.4	SCENE 1.5	SCENE 1.6	SCENE 1.7	SCENE 1.8	SCENE 1.9	SCENE 1.10	SCENE 1.11	SCENE 1.12	SCENE 1.13	SCENE 1.14	SCENE 1.15	SCENE 1.16			
EST. TIME- ALL THE SAME DAY	Morning	Morning	Morning	Morning	Morning	Morning	Morning	Morning	Morning	Morning	Morning	Morning	Morning	Morning	Morning	Morning			
ANDY	Look #1			Look #2	Look #2						Look #3	Look #3			Look #3	Look #3			ANDY
BOBBY	Look #1			Look #2	Look #2						Look #3	Look #3			Look #3	Look #3			BOBBY
ISABELLA		Look #1	Look #1	Look #1	Look #1	Look #1		Look #1.5	Look #1.5		Look #1.5	Look #1.5		Look #1.5	Look #1.5	Look #1.5			ISABELLA
GABRIELA		Look #1	Look #1	Look #1	Look #1	Look #1		Look #1.5	Look #1.5		Look #1.5			Look #1.5	Look #1.5	Look #1.5			GABRIELA
FRED	Look #1		Look #1	Look #1	Look #1	Look #1	Look #1			Look #1	Look #1	Look #1	Look #1		Look #1	Look #1			FRED
CHRISTINA								Look #1	Look #1	Look #1	Look #1		Look #1			Look #2			CHRISTINA
ACT TWO	SCENE 2.1	SCENE 2.2	SCENE 2.3	SCENE 2.4	SCENE 2.5	SCENE 2.6	SCENE 2.7	SCENE 2.8	SCENE 2.9	SCENE 2.10	SCENE 2.11	SCENE 2.12	SCENE 2.13	SCENE 2.14	SCENE 2.15	SCENE 2.16	SCENE 2.17	SCENE 2.18	
EST. TIME- ALL THE SAME DAY	Afternoon	Afternoon	Afternoon	Afternoon	Afternoon	Afternoon	Afternoon	Afternoon	Afternoon	Afternoon	Afternoon	Afternoon	Afternoon	Afternoon	Evening	Evening	Evening	Evening	
ANDY				Look #3	Look #3	Look #3		Look #3	Look #3			Look #3	Look #3	Look #3	Look #3	Look #3	Look #3	Look #3	ANDY
BOBBY				Look #3	Look #3			Look #3	Look #3		Look #3	Look #3	Look #3	Look #3	Look #3	Look #3	Look #3	Look #2	BOBBY
ISABELLA	Look #2	Look #2	Look #2	Look #2	Look #2	Look #2	Look #2			Look #2	Look #2	Look #2				Look #3	Look #3	Look #3	ISABELLA
GABRIELA	Look #2	Look #2	Look #2	Look #2	Look #2					Look #2						Look #3	Look #3	Look #3	GABRIELA
FRED			Look #1	Look #1					Look #1		Look #1	Look #1	Look #1	Look #1	Look #1		Look #1	Look #1	FRED
CHRISTINA	Look #1			Look #1						Look #1	Look #1	Look #1	Look #1	Look #1	Look #1		Look #3	Look #1	CHRISTINA